



# St. John's Lane Elementary School



## 2019-2020 School Year Overview



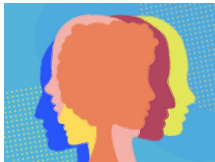
- **HCPSS Strategic Call to Action:** <https://www.hcpss.org/scta/>
- **HCPSS Vision:** Every student and staff member embraces diversity and possesses the skills, knowledge and confidence to positively influence the larger community.
- **HCPSS Mission:** HCPSS ensures academic success and social-emotional well-being for each student in an inclusive and nurturing environment that closes opportunity gaps.

### Information, Communication, & Resources

- SJLES Website: <https://sjles.hcpss.org/>
- SJLES Twitter: [@hcpss\\_sjles](https://twitter.com/hcpss_sjles)
- Address: 2960 St. John's Lane, Ellicott City, MD 21042
- Phone: 410-313-2813
- Fax: 410-313-2817
- Dan Notari, Principal, [dnotari@hcpss.org](mailto:dnotari@hcpss.org)
- Alexcia Redd, Assistant Principal, [alexcia\\_redd@hcpss.org](mailto:alexcia_redd@hcpss.org)
- SJLES Student Absence email: [sjlesabsences@hcpss.org](mailto:sjlesabsences@hcpss.org) cc: Child's homeroom teacher
- HCPSS Website: <https://www.hcpss.org/>
- HCPSS Connect: <https://www.hcpss.org/connect/> (Synergy, Canvas, Family File)
  - Please update your Family File EACH YEAR.
  - Email and texts will be sent to the contact information in your Family File.
  - Login Assistance: 410-313-2813
- HCPSS Status (Inclimate Weather): <https://status.hcpss.org/> & 410-313-6666
- Please allow up to 24 hours for staff to return emails/calls.
- School Start & Dismissal Times: 8:45 a.m. - 3:15 p.m.
- Please check your child's folder daily and agenda books daily in grades 3-5.



### SJLES Mental Health and Student Supports



- School Counselor: [Rebecca\\_Poirier@hcpss.org](mailto:Rebecca_Poirier@hcpss.org)
- School Psychologists: [Evan\\_Gallena@hcpss.org](mailto:Evan_Gallena@hcpss.org)
- Pupil Personnel Worker: [Catherine\\_Chapman@hcpss.org](mailto:Catherine_Chapman@hcpss.org)
- ESOL Support: [Kathy-Ann\\_Burke-Royster@hcpss.org](mailto:Kathy-Ann_Burke-Royster@hcpss.org) and [Maxine\\_Drazenovic@hcpss.org](mailto:Maxine_Drazenovic@hcpss.org)
- Special Education ITL: [Lisa\\_Martinez@hcpss.org](mailto:Lisa_Martinez@hcpss.org)
- Reading Specialist: [Elizabeth\\_Taylor@hcpss.org](mailto:Elizabeth_Taylor@hcpss.org)

### Parent Teacher Association (PTA)

Your involvement with our SJLES PTA will benefit everyone, but the greatest reward is seeing the smile on your child's face when you are involved in his or her world. Please consider joining our PTA.



PTA Website: <https://sjlespta.org>

PTA President: Diana Choi

### What will my child learn?

"What Your Child Will Learn" guides provide an overview of the instructional program for your child's grade, as well as student goals and expectations. The guides include information to help parents monitor and support their child's progress during the school year. Individual guides are provided for each grade level. The guide identifies the content covered in each curriculum area, categorized by subject, e.g., Language Arts, Science, etc. Find the guides online in Canvas. (The guides are available online only; print versions are no longer distributed.) Access Canvas through [HCPSS Connect](#).

### Local & State Assessments

- Measures of Academic Progress ([MAP](#)) - Grades 1 through 5
- MCAP/[PARCC](#) Assessments - Grades 3, 4, and 5
- Cognitive Abilities Test (CogAT) - Grades 3 and 5
- Maryland Integrated Science Assessment ([MISA](#)) - Grade 5
- Kindergarten Readiness Assessment - Kindergarten student
- Access - Students receiving ESOL services



### Interactive School Menus

- HCPSS students and their families can now view menus and nutrition and allergen information for meals served in all HCPSS schools through [Nutrislice](#), a website and free smartphone app.
- Parents may prepay for student meals by setting up an online account at [myschoolbucks.com](#). There is a \$2.49 processing fee for each transaction. Each transaction can be up to \$120.00 in total.
- Students from households that meet federal income guidelines are eligible to receive free or reduced-price meals. Those eligible for reduced-price meals pay \$0.30 for breakfast and \$0.40 for lunch. To apply visit: <https://www.hcpss.org/food-services/farms/>
- Student prices: Breakfast \$2.00, Lunch \$2.75, Milk \$0.50



### Elementary Report Card Changes for 2019-2020

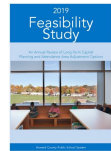
Beginning this year, changes to Learning Behaviors will be made to your child's report card to provide greater insights to parents/guardians. Detailed information about these changes can be found at <https://www.hcpss.org/academics/learning-behaviors/>

### Technology Use in School

HCPSS permits students to bring personal technology devices to school for instructional or personal use, under the discretion of school administrators and teachers. Students will never be required or expected to bring a personal device to school. When an instructional activity is planned that needs access to individual technology, devices will be provided for use by students who do not have their own technology. At St. John's Lane, we ask that if your child brings a device to school that it remains off an in backpacks at all times. To learn more about student and parent expectations visit <https://www.hcpss.org/byod/frequently-asked-questions/>

### Boundary Review Process

- Most Recent Information: [www.hcpss.org/school-planning/boundary-review/](http://www.hcpss.org/school-planning/boundary-review/)
- Frequently Asked Questions: [www.hcpss.org/school-planning/boundary-review/faq/](http://www.hcpss.org/school-planning/boundary-review/faq/)
- Supporting Students at a New School: <https://www.hcpss.org/school-planning/boundary-review/moving-schools/>
- Language Supports: <https://www.hcpss.org/languages/english/>



### Health Room

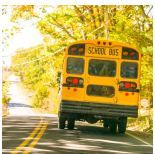
Cluster Nurse: Florence\_Hanssen@hcpss.org  
Health Assistant: Amy\_Leisner@hcpss.org  
Health Room Phone: 410-313-8705

Please make sure your immunizations are up to date and you provide this information to the health room. If your child needs medication, you must communicate this need to our health room and complete the necessary paperwork.



### Transportation

- Information about your child's bus assignments can be found by logging on to [HCPSS Connect](#). You may also visit the [HCPSS school bus locator](#). Bus times vary the first week. The children should follow their year long procedure beginning the first day. Bands will be placed on backpacks on the first day of school. Please keep these bands on your child's backpack for at least the first week of school. Throughout the school year, students are only permitted to ride their assigned bus.
  - Car riders should not enter the doors in the morning until the morning bell rings. Children should **remain in their cars** until the bell rings at 8:35. Car riders are dismissed first in the afternoon. Please do not get out of your car in the loop for any reason or to assist your child. A staff member can assist as needed. To ensure our students are safe, please do not pass others and remember to be courteous to others.



### Important Safety Reminders

- Emergency Information is collected online through the Family File. Please list contacts other than parents and update this information throughout the year as needed. We must have the most current information in the event of an emergency.
- Photo ID is always required if you are visiting school or picking up your child early.
- If your child arrives late to school, you must walk in and sign your child in.
- A written note must be given to your child's teacher after every absence.
- In the event of an emergency, there is a system-wide plan. Please do not call the school. Communication will be sent via email when necessary.