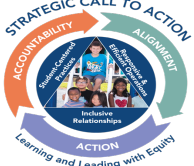




# St. John's Lane Elementary School

## 2020-2021 School Year Overview



- **HCPSS Strategic Call to Action:** <https://www.hcpss.org/scta/>
- **HCPSS Vision:** Every student and staff member embraces diversity and possesses the skills, knowledge and confidence to positively influence the larger community.
- **HCPSS Mission:** HCPSS ensures academic success and social-emotional well-being for each student in an inclusive and nurturing environment that closes opportunity gaps.

### Information, Communication, & Resources

- SJLES Website: <https://sjles.hcpss.org/>
- SJLES Twitter: [@hcpss\\_sjles](https://twitter.com/hcpss_sjles)
- Address: 2960 St. John's Lane, Ellicott City, MD 21042
- Phone: 410-313-2813
- Fax: 410-313-2817
- Dan Notari, Principal, [dnotari@hcpss.org](mailto:dnotari@hcpss.org)
- Alexcia Redd, Assistant Principal, [alexcia\\_redd@hcpss.org](mailto:alexcia_redd@hcpss.org)
- SJLES Student Absence email: [sjlesabsences@hcpss.org](mailto:sjlesabsences@hcpss.org) cc: Child's homeroom teacher
- HCPSS Website: <https://www.hcpss.org/>
- HCPSS Connect: <https://www.hcpss.org/connect/> (Synergy, Canvas, Family File)
  - Please update your Family File EACH YEAR.
  - Email and texts will be sent to the contact information in your Family File.
  - Login Assistance: 410-313-2813
- HCPSS Status (Inclement Weather): <https://status.hcpss.org/> & 410-313-6666
- Please allow up to 24 hours for staff to return emails/calls.
- School Start & Dismissal Times: 8:45 a.m. - 3:15 p.m.
- Please check your child's folder daily and agenda books daily in grades 3-5.



### SJLES Mental Health and Student Supports

- School Counselor: [Rebecca\\_Poirier@hcpss.org](mailto:Rebecca_Poirier@hcpss.org)
- School Psychologists: [Evan\\_Gallena@hcpss.org](mailto:Evan_Gallena@hcpss.org)
- Pupil Personnel Worker: [Catherine\\_Chapman@hcpss.org](mailto:Catherine_Chapman@hcpss.org)
- ESOL Support: [Kathy-Ann\\_Burke-Royster@hcpss.org](mailto:Kathy-Ann_Burke-Royster@hcpss.org)
- Special Education ITL: [Lisa\\_Martinez@hcpss.org](mailto:Lisa_Martinez@hcpss.org)
- Reading Specialist: [Elizabeth\\_Taylor@hcpss.org](mailto:Elizabeth_Taylor@hcpss.org)

**Homeroom Assignments - are available through Synergy after parents have completed their Family File Supply lists, upcoming events, etc. will be available on our website: <https://sjles.hcpss.org/>**

### Important Dates

**Kindergarten, New Student, and SJLES Open House: Monday, August 24, 2020**

**First Day of School: Tuesday, August 25, 2020**

### Health Room

Cluster Nurse: [Florence\\_Hanssen@hcpss.org](mailto:Florence_Hanssen@hcpss.org)

Health Assistant: [Amy\\_Leisner@hcpss.org](mailto:Amy_Leisner@hcpss.org)

Health Room Phone: 410-313-8705

Please make sure your immunizations are up to date and you provide this information to the health room. If your child needs medication, you must communicate this need to our health room and complete the necessary paperwork.



### Parent Teacher Association (PTA)

PTA Website: <https://sjlespta.org>

Please consider joining our PTA! Your involvement with our SJLES PTA will benefit everyone, but the greatest reward is seeing the smile on your child's face when you are involved in his or her world.

### Interactive School Menus

- HCPSS students and their families can now view menus and nutrition and allergen information for meals served in all HCPSS schools through [Nutrislice](#), a website and free smartphone app.
- Parents may prepay for student meals by setting up an online account at [myschoolbucks.com](#).
  - There is a \$2.49 processing fee for each transaction.
  - Each transaction can be up to \$120.00 in total.
- Students from households that meet federal income guidelines are eligible to receive free or reduced-price meals.
  - Those eligible for reduced-price meals pay \$0.30 for breakfast and \$0.40 for lunch.
  - To apply visit: <https://www.hcpss.org/food-services/farms/>
- Student prices: Breakfast \$2.00, Lunch \$2.75, Milk \$0.50

### Technology Use in School

HCPSS permits students to bring personal technology devices to school for instructional or personal use, under the discretion of school administrators and teachers. Students will never be required or expected to bring a personal device to school. When an instructional activity is planned that needs access to individual technology, devices will be provided for use by students who do not have their own technology.

At St. John's Lane, we ask that if your child brings a device to school that remains off in backpacks at all times. To learn more about student and parent expectations visit <https://www.hcpss.org/byod/frequently-asked-questions/>

### What Your Child Will Learn Guides

These guides provide an overview of the instructional program for your child's grade, as well as student goals and expectations. The guides include information to help parents monitor and support their child's progress during the school year. Individual guides are provided for each grade level. The guide identifies the content covered in each curriculum area, categorized by subject, e.g., Language Arts, Science, etc. Find the guides online in Canvas which can be accessed through [HCPSS Connect](#). The guides are available online only; print versions are no longer distributed.

### Transportation

- Information about your child's bus assignments can be found by logging on to [HCPSS Connect](#). You may also visit the [HCPSS school bus locator](#). Bus times vary the first week. The children should follow their year long procedure beginning the first day. Bands will be placed on backpacks on the first day of school. Please keep these bands on your child's backpack for at least the first week of school. Throughout the school year, students are only permitted to ride their assigned bus.
  - Car riders should not enter the doors in the morning until the morning bell rings. Children should **remain in their cars** until the bell rings at 8:35. Car riders are dismissed first in the afternoon. Please do not get out of your car in the loop for any reason or to assist your child. A staff member can assist as needed. To ensure our students are safe, please do not pass others and remember to be courteous to others.



### Local & State Assessments

- Kindergarten Readiness Assessment - Kindergarten
- Measures of Academic Progress ([MAP](#)) - Grades 1 through 5
- MCAP Assessments - Grades 3, 4, and 5
- Cognitive Abilities Test (CogAT) - Grades 3 and 5
- Maryland Integrated Science Assessment ([MISA](#)) - Grade 5
- Access - Students receiving ESOL services

